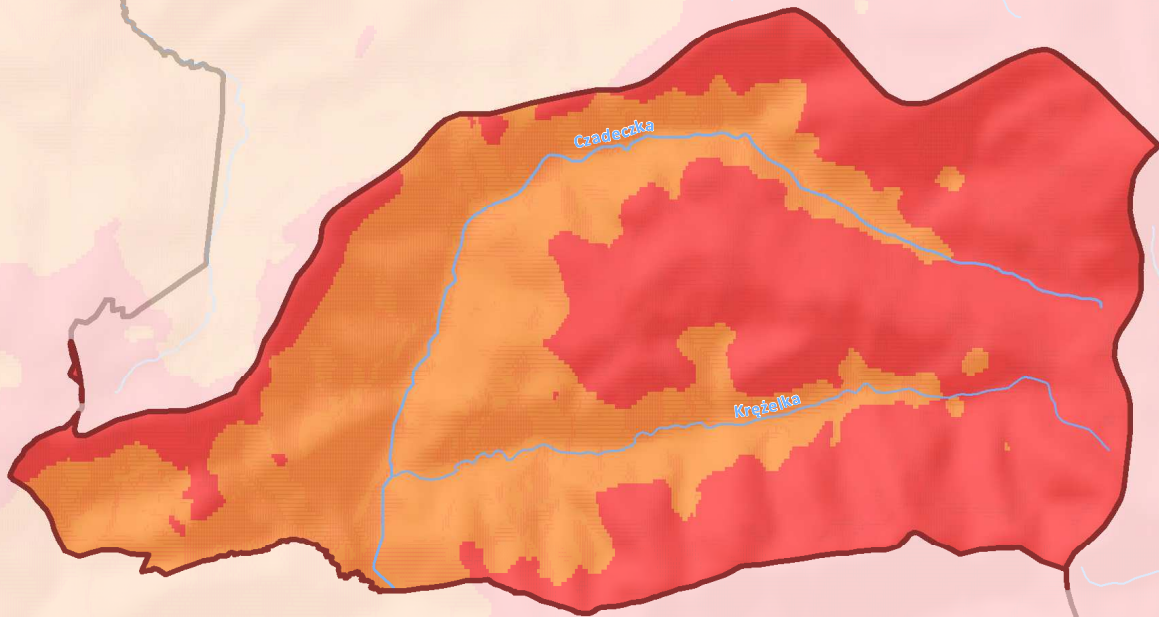


### Mapa 3. Charakterystyka hydrograficzna i hydrologiczna regionu wodnego Czadeczki







SKALA  
1:40 000

0 0,25 0,5 1 1,5 km



#### Legenda

-  rzeki
-  granice regionów wodnych
- Wysokość n.p.m [m]
-  < 70
-  70 - 160
-  160 - 300
-  300 - 430
-  430 - 600
-  600 - 900
-  900 - 1 230
-  > 1 230

